

Understanding cancer screening
rates for patients who identify as
transgender or gender non-
conforming

**Sam Davie, Quality Improvement & Decision
Support Specialist**

St. Michael's

Inspired Care. Inspiring Science.

Co-Authors

Dr. Tara Kiran^{1,2,3,4}

Dhanveer Singh

Sue Hranilovic²

Dr. Andrew Pinto^{1,2,3,5}

Dr. Alex Abramovich⁶

Dr. Aisha Lofters^{1,2,3,4,5}

¹Centre for Urban Health Solutions, Li Ka Shing Knowledge Institute, St. Michael's Hospital

²Department of Family and Community Medicine, St. Michael's Hospital

³Department of Family and Community Medicine, University of Toronto

⁴Institute for Clinical Evaluative Sciences

⁵Dalla Lana School of Public Health

⁶Centre for Addiction and Mental Health



Outline

Background

Identifying
Eligible
Patients

Screening
Rates



Background – Our Setting

Background

Identifying
Eligible
Patients

Screening
Rates



Background

Identifying Eligible Patients

Screening Rates

Background – Our Setting



Background

Identifying Eligible Patients

Screening Rates

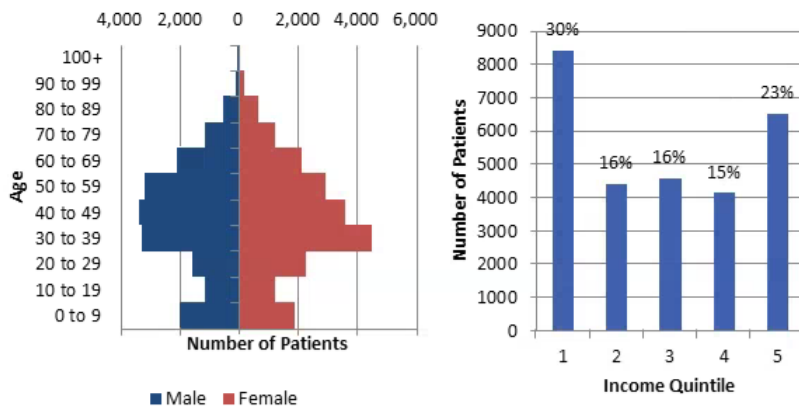
Background – Our Setting

Who are we?

249 Staff	72 Physicians (40.7 cFTE)	38 Resident Physicians	34 Nurses (24.3 FTE)	6 NPs (5.6 FTE)	44 Clerical Staff (41.3 FTE)	26 Health Disciplines (19.4 FTE)	13 Non-clinical (12.6 FTE)
------------------	----------------------------------	-------------------------------	-----------------------------	------------------------	-------------------------------------	---	-----------------------------------

Who are we caring for?

40,381 rostered patients | 3,697 rostered in the past year



*Data source: Health Equity Survey (15,416 patients); ^bIncludes boarding home, correctional facility, homeless, group home, shelter/hostel, supportive housing

Patients who live in^a ...

owned housing 44%	rented housing 50%	marginal housing ^b 6%
-----------------------------	------------------------------	--

Patients falling below the low-income cut-off^a:
31%

Patients within the mid-East sub-LHIN:
34%

Number of patients with...

Schizophrenia 580	Bipolar 423	Addictions 720
-----------------------------	-----------------------	--------------------------

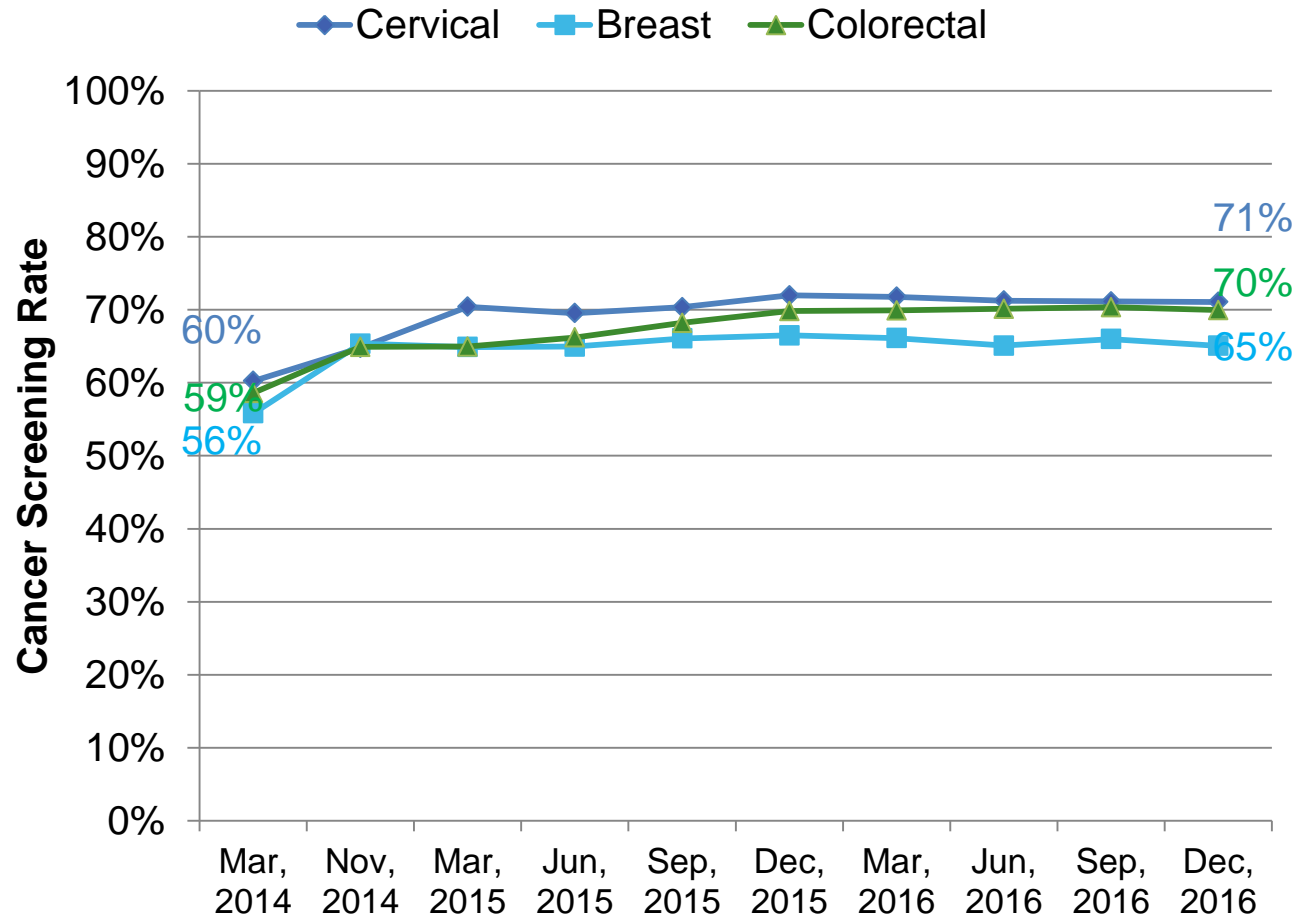


Background

Identifying Eligible Patients

Screening Rates

Background – Our Setting

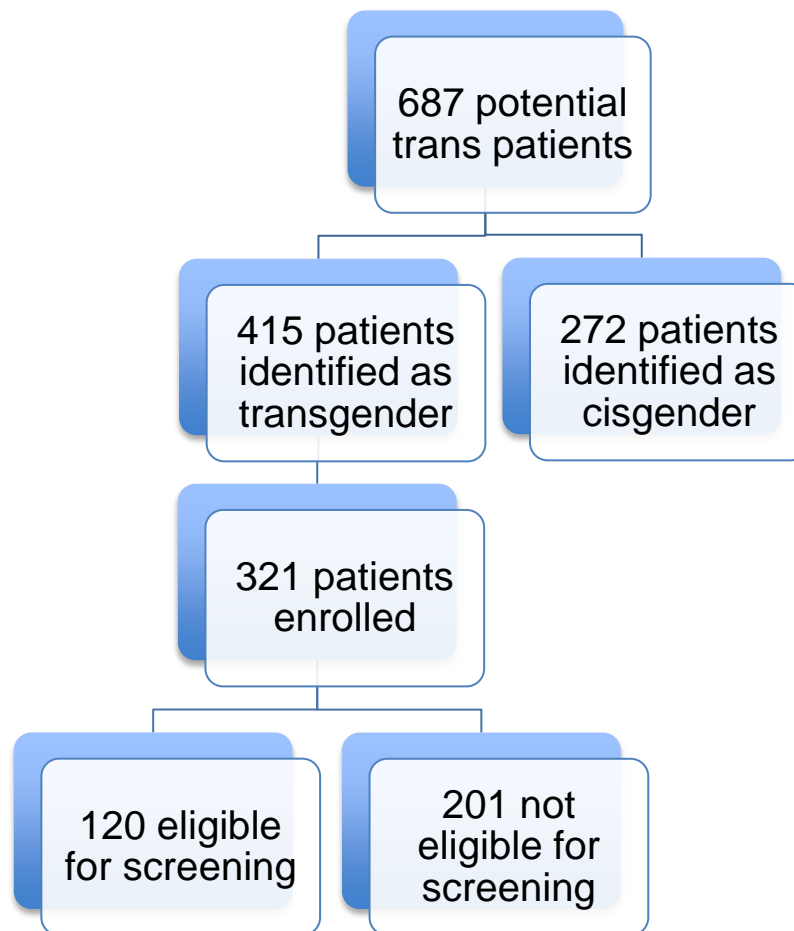


Background

Identifying Eligible Patients

Screening Rates

Identifying Eligible Patients



Identifying Eligible Patients

Background

Identifying
Eligible
Patients

Screening
Rates

Question: how do cervical, breast, and colorectal cancer screening rates differ between patients who identify as transgender or gender non-binary and those who identify as cisgender



Background

Identifying Eligible Patients

Screening Rates

Cervical Cancer Screening Rates

Logistic regression model of cervical cancer screening on trans status, adjusted for age group and number of visits

Variable	B	OR	CI (95%)	p-value
Trans	-0.8930	0.409	(0.262, 0.641)	<.0001
Age (ref=60-74)				
21-29	0.3184	1.375	(1.195, 1.581)	<.0001
30-39	0.6800	1.974	(1.745, 2.233)	<.0001
40-49	0.7660	2.151	(1.888, 2.450)	<.0001
50-59	0.5309	1.700	(1.487, 1.944)	<.0001
# Visits (ref=0)				
1	1.1693	3.220	(2.882, 3.597)	<.0001
2-3	1.4532	4.277	(3.852, 4.748)	<.0001
4-10	1.5072	4.514	(4.038, 5.047)	<.0001
11+	1.7058	5.506	(4.240, 7.150)	<.0001



Background

Identifying
Eligible
Patients

Screening
Rates

Breast Cancer Screening Rates

Breast cancer screening rates for trans patients and cis patients

	Trans patients (n=30)	Cis patients (n=5265)	p-value*
Breast cancer screening rate	33%	65%	0.003

*Chi-square



Background

Identifying Eligible Patients

Screening Rates

Colorectal Cancer Screening Rates

Adjusted logistic regression model of colorectal cancer screening on trans status, adjusted for age group, and number of visits

Variable	B	OR	CI (95%)	p-value
Trans	-0.6563	0.519	(0.276, 1.008)	0.0529
Age (ref=60-74)				
50-59	-0.5167	0.596	(0.548, 0.649)	<.0001
# Visits (ref=0)				
1	0.9563	2.602	(2.288, 2.960)	<.0001
2-3	1.1791	3.252	(2.898, 3.648)	<.0001
4-10	1.2351	3.439	(3.057, 3.869)	<.0001
11+	1.2443	3.470	(2.734, 4.406)	<.0001



Background

Identifying
Eligible
Patients

Screening
Rates

Next Steps

- Partner with patients to understand root causes of low screening rates
- Documentation:
 - Screening eligibility
 - Informed discussions

